

SPLIT SYSTEMS



BREEZELESS+ COMPACT ROUNDFLOW CASSETTE



The Midea compact Round Flow cassette is the perfect solution for commercial, office or retail spaces. It features a 360° air outlet which provides even airflow circulation to cool or heat every corner of a room and keep a constant temperature.

- 360° Air Flow Panel
- Refrigerant Leakage Detect
- Louvre Position Memory
- Fresh Air Inlet
- Remote Enable Port
- Temperature Compensation
- Anti-cold Air Function
- Low Ambient Cooling
- Emergency Use Function
- Built-in Drain Pump
- Wired Control
- Central Control Management
- Voice Control
- Smart Home
- WiFi

HIGH ENERGY EFFICIENCY

Up to SEER 6.8(A++)/SCOP 4.1 (A+).

BREEZELESS+ EFFECT

2468 hourglass-shaped micro holes turn the airflow into thousands of tiny particles of cool air, softening the airflow to eliminate the feeling of cold draughts.

360° AIRFLOW OUTLET

360° air outlet provides even airflow circulation to cool or heat every corner of a room and keep a constant temperature.

I-ECO DASHBOARD

With high precision power detection technology, users can see the energy consumption data of the systems on their APP. View statistics for the day, week, month, and even the current year. Every kilowatt hour of the systems can be seen clearly.

ADJUSTABLE VANE & LONG AIRFLOW

Adjustable vane from 0°C to 75° and up to 5.5 meters long air flow to meet the far corner of a room.

SELF-CLEANING OUTDOOR UNIT

At the end of each operation the outdoor unit fan will run in reverse, removing dust to improve efficiency and reduce wear and tear.

TWIN, TRIPLE, QUAD COMBINATIONS

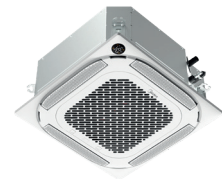
Outdoor unit sizes 24,36,48 can be installed with multiple indoor units for increased flexibility.

SMARTHOME APP

New wired controller has built in WiFi, allowing you to operate your system from almost anywhere, at any time.

LED FASCIA DISPLAY

Built-in display for easy trouble shooting and system information.



Indoor unit



Outdoor unit



IR Controller RG10-B (included)



Wired Controller KJR-120M1 (included)



SPLIT SYSTEMS



BREEZELESS+ COMPACT ROUNDFLOW CASSETTE

INDOOR			MCA4U-12HRFNX(GA)	MCA4U-18HRFNX(GA)
OUTDOOR			MOX230-12HFN8-Q(GA)	MOX330U-18HFN8-Q(GA)
Nominal Cooling Capacity (min-max)	kW		3.52(0.85-4.16)	5.28(2.90-5.59)
Nominal Heating Capacity (min-max)	kW		3.81(0.47-4.34)	5.57(2.37-6.10)
UK Total Cooling Capacity	kW		3.9	5.3
Seasonal Efficiency SEER/Class	W/W		6.8/A++	6.5/A++
Seasonal Efficiency SCOP/Class	W/W		4.1/A+	4.1/A+
Power supply (indoor power via outdoor)	V- Ph-Hz		220-240V,1Ph,50Hz	220-240V,1Ph,50Hz
Cooling Current (min-max)	A		4.5(1.3-6.4)	6.9(3.2-9.0)
Heating Current (min-max)	A		4.5(1.1-6.2)	6.8(3.1-8.6)
Max.Current	A		9	13.5
Recommended Fuse Size (Outdoor)	A		16	16
Interconnecting/Indoor Power Wiring	No.		4 Core 1mm ²	4 Core 1mm ²
Indoor air flow (High - Low)	m ³ /h		620/520/330	660/540/300
Indoor Sound Pressure Level (High-Low)	dB(A)		42/38.5/31.5/25.5	44/41/31.5/25
Indoor unit	Dimensions (WxDxH) (body)	mm	570x570x245	570x570x245
	Packing (WxDxH)(body)	mm	715x640x295	715x640x295
	Dimensions (WxDxH) (panel)	mm	620x620x50	620x620x50
	Packing (WxDxH)(panel)	mm	715x700x115	715x700x115
	Net/Gross Weight (body)	Kg	16.1/18.8	16.2/19
	Net/Gross Weight (panel)	Kg	2.7/4.3	2.7/4.3
Drainage water pipe dia.	mm		ODØ25	ODØ25
Outdoor air flow	m ³ /h		2200	2100
Outdoor sound pressure level	dB(A)		51	53
Outdoor unit	Dimensions (WxDxH)	mm	765x303x555	805x330x554
	Packing (WxDxH)	mm	887x337x610	915x370x615
	Net/Gross Weight	Kg	26.6/29	32.5/35.2
Refrigerant	Type		R32	R32
	GWP		675	675
	Charged quantity	Kg	0.72	1.15
	Charged to	m	5	5
	Additional Charge	g/m	12	12
Refrigerant piping	Liquid side/ Gas side	mm(inch)	Ø6.35/Ø9.52(1/4"/3/8")	Ø6.35/Ø12.7(1/4"/1/2")
	Max. pipe length	m	25	30
	Max. height difference	m	10	20
Operating temperature	Indoor (Cooling/Heating)	°C	16-32/0-30	16-32/0-30
	Outdoor (Cooling/Heating)	°C	-15-50/-15-24	-15-50/-15-25

Nominal Conditions: Cooling; indoor 27°C DB, 19°C WB, outdoor 35°C DB, 24°C WB.
 Nominal Conditions: Heating; indoor 20°C DB, outdoor 7°C DB, 6°C WB.
 UK Conditions: Summer; indoor 21°C DB, 15°C WB, outdoor 27°C DB.
 Sound Pressure is measured 1.5m below the air-outlet at Nominal Conditions.